



Release Notes
Axiom Rolling Forecast
Version 2019.4.4



KaufmanHall

AXIOM

KaufmanHall

5202 Old Orchard Rd. Suite N700
Skokie, IL 60077
(847) 441-8780
(847) 965-3511 (fax)
www.kaufmanhall.com

Support email: support@kaufmanhall.com

Kaufman Hall® is a trademark of Kaufman, Hall & Associates, LLC. Microsoft®, Excel®, and Windows® are trademarks of Microsoft Corporation in the United States and/or other countries. All other trademarks are the property of their respective owners.

This document is Kaufman, Hall & Associates, LLC Confidential Information. This document may not be distributed, copied, photocopied, reproduced, translated, or reduced to any electronic medium or machine-readable format without the express written consent of Kaufman, Hall & Associates, LLC.

Copyright © 2020 Kaufman, Hall & Associates, LLC. All rights reserved.

Version: 2019.4.4

Updated: 5/12/2020

Contents

Special note about version 2019.4.4	4
Summary	5
Product upgrade notes	7
New features summary	8
Improved RF Deductions Calculator	8
Redesigned Home page for Windows and Excel clients	10
Issues resolved in 2019.4	11
Issues resolved in 2019.4.2	15
Issues resolved in 2019.4.3	16
Issues resolved in 2019.4.4	18

Special note about version 2019.4.4

Axiom Rolling Forecasting now includes significant resolved defects that have been addressed since the release of 2019.4. We highly encourage you to consider implementing this patch to improve your overall experience with the product.

Summary

Kaufman Hall is pleased to announce the 2019.4.4 release of Axiom Rolling Forecast. Each product release provides new features, enhancements, and configuration options to meet your needs. Many of these features and enhancements are a direct result of your feedback and suggestions.

Summary of the upgrade process:

1. **Review product release notes** – Review this document to familiarize yourself with the new features and functionality.
2. **Schedule an installation date** – Contact support@kaufmanhall.com or your implementation consultant, and they will confirm an installation period with you.
3. **Complete manual updates** – After installing the upgrade, if needed, review any manual setup steps needed to enable features for this version.

► Escalating to Axiom Support

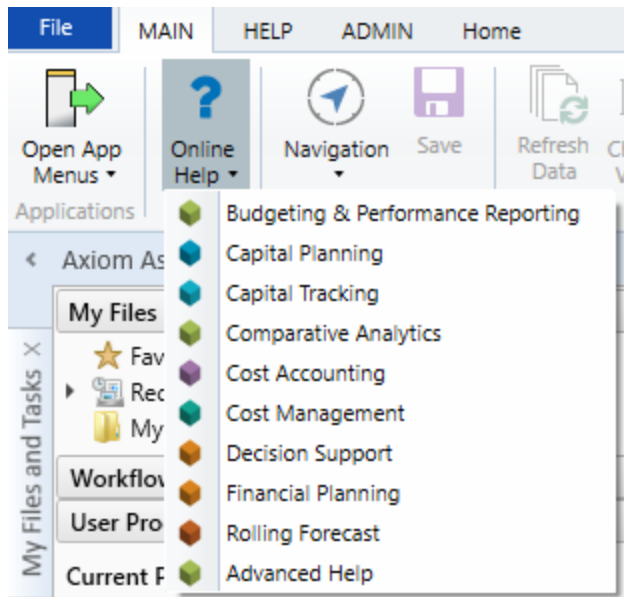
As always, we appreciate your commitment to Kaufman Hall. If you have any questions about your upgrade, please contact us by logging into Axiom, navigating to the online help for your product, and clicking the **Axiom Support** link at the top of the home page.

► Training

Kaufman Hall provides world-class resources at your fingertips directly within the Axiom Software system. Axiom Help provides topics, knowledge base articles, documents, webinar/training announcements, and videos to guide you through managing your system. To access these resources, do any of the following:

- **Online help** - From the Main, Help, or Admin ribbon tab, click **Online Help**, and then select the product. Axiom Help opens in a new browser window.

NOTE: The online help will only open for products you are licensed to use.



- **Contextual help** - Form/web-enabled features include contextual help directly within the user interface. This information provides a quick summary and/or instructions specifically related to the screen you are using. You can access this information by clicking the question mark in the upper right corner of the screen. For more detailed information, open Axiom Help by clicking **Open Help** at the top of the contextual help dialog.



Product upgrade notes

IMPORTANT: You must apply the Axiom Software 2019.4.4 upgrade before applying any 2019.4.4 Axiom product upgrades. Axiom Software upgrades are backwards compatible so you can upgrade different products at different times, but you must upgrade to the Axiom Software 2019.4.4 before the first product upgrade. Refer to the **Axiom Software 2019.4.4 Release Notes** and **Axiom Healthcare Suite 2019.4.4 Release Notes** for considerations before upgrading.

When upgrading to the 2019.4.4 version of Axiom Rolling Forecast, keep in mind the following:

- This product upgrade contains updated templates, calculation methods, updated drivers, and remediated defects.
- KHA delivered reports may be replaced. Any report that you saved under a different name or created new will remain untouched. Replaced reports are available in Document History, if needed.
- Any KHA delivered report that was moved to a new location will automatically move back to its original location.
- KHA product templates and calculation method libraries will be replaced.
- Product task panes will be replaced.
- Process definitions will not be replaced.
- Driver files will be replaced.
- Security roles and sub-systems will be reset to their configured settings. All user security exceptions you may have made will remain intact.
- Specific items configured as part of your company or organization's implementation such as imports, exports, driver files, and process management files, will remain as is. Any required modifications to these areas are covered in the release notes, if required.

New features summary

This section includes a description for each new feature included in this release.

Improved RF Deductions Calculator

The RF Deductions Calculator has been updated and improved both visually and functionally, making it easier to navigate and providing more options for greater flexibility.

► Deductions tab

The 25 fixed payor rows have been removed. This tab now displays only Payor 1, Medicare, and payors that you add in the PayorCodes tab.

Rolling Forecast Deductions Calculator
BarnabasQA
For the Period Ending October 31, 2019
RF Plan Group: CLM01
Deductions RF Group: CLM01_Revenue
Save to Database?
Default Forecast Method:

SAVE PAYOR CODES ONLY
LastQuarter

Summary info is in one place, aligned

Save options and default forecast drop-downs are vertically aligned

Column headers are now shaded gray for better visibility

		FY2018	FY2018	FY2018	FY2019	FY2019	FY2019	FY2019	FY2019
			Jul-Sep 2018	Oct-Dec 2018	Jan-Mar 2019	Apr-Jun 2019	Jul-Sep 2019	Oct 2019	Nov 2019
		Actual	Actual	Actual	Actual	Actual	Actual	Actual	Forecast
CLM01	RFCode								
Patient Volume									
Inpatient Volume		Discharges							
Total Inpatient Volume CLM01_K_Discharges - per Plan File		K_Discharges							
Check Total Total Discharges by Payor		4,342	4,430	4,173	4,364	4,342	4,430	1,391	
		1,855	1,804	1,696	1,877	1,855	1,804	582	
% Discharges by Payor									
Medicare		79.51%	77.72%	77.83%	80.60%	79.51%	77.72%	78.35%	
Medicaid		20.49%	22.28%	22.17%	19.34%	20.49%	22.28%	21.65%	
Commercial		0.00%	0.00%	0.00%	0.00%	0.00%	0.00%	0.00%	
Total % Discharges by Payor		100.00%	100.00%	100.00%	100.00%	100.00%	100.00%	100.00%	
Discharges by Payor									
Medicare		1,475	1,402	1,320	1,514	1,475	1,402	456	
Medicaid		380	402	376	363	380	402	126	
Commercial		0	0	0	0	0	0	0	
Total Discharges by Payor		1,855	1,804	1,696	1,877	1,855	1,804	582	
Patient Days		PatientDays							
Total Patient Days CLM01_K_Indirect_PatientDays_IP - per Plan File		K_Indirect_PatientDays_IP							
Check Total Total Patient Days by Payor		296,029	290,137	292,330	308,900	296,029	290,137	97,903	
		10,553	9,839	9,882	11,235	10,553	9,839	3,353	
% Patient Days by Payor									

Check Total row header is red to match data

You can now select data drivers for each stats section

Only Medicare and payors you configure display in each 'by Payor' section

Calculation Driver: LengthofStay

For more information, see “Calculating deductions” in the online help.

► PayorCodes tab

Now most of the fields in this tab can be edited to better fit how your organization uses payor codes.

Payor Codes											
Prefix	DB Data?	S_Disch	S_IPPD	S_OPVisits	R_IP	R_OP	D_IP	D_OP	S_CMYTDDisch	S_CMYTDWeight	
Payor Setup		Yes	Yes	Yes	Yes	Yes	Yes	Yes	Yes	Yes	
Payor Group Name	Suffix	Discharge Code	Inpatient Patient Days Code	Outpatient Visits Code	Inpatient Gross Revenue Code	Outpatient Gross Revenue Code	Inpatient Deductions Code	Outpatient Deductions Code	CMYTD Discharges	YTD CMYTDWeight	
Medicare	Medicare	S_DischMedicare	S_IPPDMedicare	S_OPVisitsMedicare	R_IPMedicare	R_OPMedicare	D_IPMedicare	D_OPMedicare	S_CMYTDDischMedicare	S_CMYTDWeightMedicare	
Medicaid	Medicaid	S_DischMedicaid	S_IPPDMedicaid	S_OPVisitsMedicaid	R_IPMedicaid	R_OPMedicaid	D_IPMedicaid	D_OPMedicaid	S_CMYTDDischMedicaid	S_CMYTDWeightMedicaid	
Commercial	Commercial	S_DischCommercial	S_IPPDCommercial	S_OPVisitsCommercial	R_IPCommercial	R_OPCommercial	D_IPCommercial	D_OPCommercial	S_CMYTDDischCommercial	S_CMYTDWeightCommercial	
Type payors here; the rest of the columns autopopulate		Payor codes that need to be mapped to the RFCODE table or with names that are too long are highlighted red				You can edit individual codes					
Administrative Adjustments	ADMIN	Total									
Charity	Charity	Total									
BadDebt	BadDebt	Total									

For more information, see “Step 2: Set up your payors” in “Setting up the RF Deductions Calculator” in the online help.

► PayorSetup tab

This tab has been reformatted to be consistent with rest of the calculator tabs.

Data Type	String	String	String	String	String	String	String	String	String	String	String	String
String Length	50	100	25	25	25	25	25	25	25	25	25	50
Description	Rolling Forecast Code	Description	Statement	Type	Financial Statement Summary	Financial Statement Detail	Financial Statement Payor	Code Type	Rolling Forecast Sum	Rolling Forecast Standard	Rolling Forecast Line	KHAB
Delete Row	RFCODE	Description	Statement	Type	FSSummary	FSDetail	FSPayor	RFTType	RFSum	RFSIdLine	KHAB	
IP Gross Revenue by Payor												
	R_IPMedicare	IP Revenue - Medicare	IS	Revenue	R_PatientRev	R_IPRev	R_IPMedicare	PatientRevenue	IPRev	IP Revenue	R_IPRe	
	R_IPMedicaid	IP Revenue - Medicaid	IS	Revenue	R_PatientRev	R_IPRev	R_IPMedicaid	PatientRevenue	IPRev	IP Revenue	R_IPRe	
	R_IPCommercial	IP Revenue - Commercial	IS	Revenue	R_PatientRev	R_IPRev	R_IPCommercial	PatientRevenue	IPRev	IP Revenue	R_IPRe	
OP Gross Revenue by Payor												
	R_OPMedicare	OP Revenue - Medicare	IS	Revenue	R_PatientRev	R_OPRev	R_OPMedicare	PatientRevenue	OPRev	OP Revenue	R_OPRe	
	R_OPMedicaid	OP Revenue - Medicaid	IS	Revenue	R_PatientRev	R_OPRev	R_OPMedicaid	PatientRevenue	OPRev	OP Revenue	R_OPRe	
	R_OPCommercial	OP Revenue - Commercial	IS	Revenue	R_PatientRev	R_OPRev	R_OPCommercial	PatientRevenue	OPRev	OP Revenue	R_OPRe	

For more information, see the following in the online help:

- “About the RF Deductions Calculator”
- “Step 3: Copy payor codes to the RFCODE table” in “Setting up the RF Deductions Calculator”

► Summary tab

Unused payor rows no longer display in this tab; only Medicare and other payors that you set up in the PayorCodes tab are listed here.

Net Revenue - CLM01

4 Quarter History vs 4 Quarter Forecast

Date headers now have gray background for easier viewing

	Gross Revenue		Net Revenue		Net % of Gross		Impact
	Jan-19 - Dec-19	Jan-20 - Dec-20	Jan-19 - Dec-19	Jan-20 - Dec-20	Jan-19 - Dec-19	Jan-20 - Dec-20	Jan-20 - Dec-20
Inpatient							
Medicare	349,884,826	234,080,251	114,731,063	170,855,176	32.79%	72.99%	68,681,911
Medicaid	56,633,439	38,274,545	19,487,651	0	34.41%	0.00%	0
Commercial	0	0	0	0	0.00%	0.00%	0
Administrative Adjustments			0	0	0.00%	0.00%	0
Charity			(33,434,457)	(24,055,168)	0.00%	0.00%	0
BadDebt			(12,538,180)	(4,855,364)	0.00%	0.00%	0
TOTAL Inpatient	406,518,265	272,354,796	88,246,078	141,944,644	21.71%	52.12%	68,681,911
Outpatient							
Medicare	98,948,637	250,989,289	32,859,968	180,734,587	33.21%	72.01%	70,124,601
Medicaid	0	0	(7,603,493)	(5,637,440)	0.00%	0.00%	0
Commercial	0	0	0	0	0.00%	0.00%	0
Administrative Adjustments			0	0	0.00%	0.00%	0
Charity			(33,434,457)	(24,055,168)	0.00%	0.00%	0
BadDebt			(12,538,180)	(4,855,364)	0.00%	0.00%	0
TOTAL Outpatient	98,948,637	250,989,289	(20,716,161)	146,186,616	(20.94%)	58.24%	70,124,601

Payor names are now in bold text


Only payors you add to the calculator display in payor lists

For more information, see “Summary tab” in “About the RF Deductions Calculator” in the online help.

Redesigned Home page for Windows and Excel clients

The default home page used in the Windows and Excel clients has been updated with the current Axiom logo and a new look-and-feel.

Home



Welcome: Jodie Landes

ANNOUNCEMENTS

- Management Reports are distributed 12th of each month.
- E-mail notifications will be sent when reports are available
- Comments and Action Plans are required for outliers

CONTACTS

PHONE

CALENDAR

- Budget Preparation Meetings begin: 04/10/2016
- Capital Input Requests can now be entered: 04/15/2016

DASHBOARDS

KEY REPORTS

Issues resolved in 2019.4

The following table lists the resolutions for issues addressed in 2019.4, released on December 16, 2019:

Issue	Description
PFB-05268 - RF_EPM Correct standard RFCODEs [TFS 11020]	<p>Summary: Some of the standard RFCODE dimensions are incorrect in the Package Manager.</p> <p>Resolution: Corrected by fixing column N (KHABgtCode) and the RFCode column, and by changing the App description to mid-level, and the Adv Practice to mid-level.</p>
PFB-05414 - RF Monthly Payroll to GL Utility doesn't save multiple times series [TFS 11807]	<p>Summary: Data is not saving when users run the RF Monthly Payroll to GL utility. The Zero on Save function normally deletes old data from all fields in a record prior to saving the new data to the table. However, it is not saving the new data to the table.</p> <p>Resolution: Corrected by turning off the control sheet setting Zero on Save for the worksheet.</p>
PFB-06013 - RF_EPM Hide Logic wrong in RF Income Statement Summary-12 months [TFS 18076]	<p>Summary: RF Income Statement Summary 12-month report is not working as expected, so users cannot use it. Not all monthly columns display, and forecasted data for the future months is coming from the RF_Forecast table, which can have no data in some months if a forecast is run early in the year.</p> <p>Resolution: Corrected by fixing the code so that data for the report is pulled from the RF_Waterfall table to ensure that there is always forecast data for all months.</p>
PFB-06016 - RF_EPM Target Variance Report Target column coming from wrong data table [TFS 18077]	<p>Summary: RF_EPM Target Variance report target column data is incorrect because the column is pulling data from the wrong data table.</p> <p>Resolution: Corrected by fixing the code so that data is pulled from the RF_Waterfall table.</p>
PFB-06122 - RF Target Variance - Last Month field def error [TFS 18839]	<p>Summary: In the RF Target Variance worksheet, if the current period under review is period 1, then column P brings in the current year's period 12 (VariablesI41). It should bring in last year's period 12.</p> <p>Resolution: Corrected by updating the worksheet to reference the correct row.</p>

Issue	Description
PFB-06595 - RFInitiatives tab is not zeroing data [TFS 29969]	<p>Summary: On the RFInitiatives tab of the plan file template, two conflicting processes interact to delete data that should be saved when users save the tab.</p> <p>Resolution: Corrected by updating the control sheet for the plan file so that data saves properly. Also added a field to the RF_Forecast table.</p>
PFB-07843 - RF Monthly Payroll to GL Payroll12: incorrectly defaults to ACT_PAY12(Y0) upon refresh for all 12 periods [TFS 37711]	<p>Summary: The Payroll12 to Rolling Forecasting Summarization is defaulting to ACT_PAY12(Y0) upon refresh for all 12 periods instead of defaulting to Budget for periods beyond the current Forecast Period (from RFConfig).</p> <p>Resolution: Corrected by adding logic to have months greater than the forecast period default to BUD Pay12(Y0).</p>
PFB-07917 - URGENT: Incorrect Formula in Fcst Qtrs for Same Qtr and Avg Fcst Mtds on Benefit [TFS 40551]	<p>Summary: On the Forecast tab of the plan file template, there is an error in the Forecast Quarters formula when using the “Same Qtr” Forecast Method for Rate per FTE Benefits. There is also an error with the average portion of the formula. In both cases the wrong columns are being referenced.</p> <p>Resolution: Corrected by fixing the errors so that the column referencing is correct in the Pct of Salaries and Rate per FTE calc methods.</p>
PFB-07926 - Current Quarter Months hidden in Driver Driver but should be visible [TFS 40552]	<p>Summary: The Current Quarter months are hidden in the Global Driver. They should be considered Historical. For example, when the period is set to 10, that month is an Actual (AMth1) and should be displayed since the quarter is not complete.</p> <p>Resolution: Corrected so that the current quarter is now visible as part of the default setup and is included in the future/forecast periods.</p>
PFB-08076 - Change View on RFHistory tab broken [TFS 40559]	<p>Summary: On the RF History tab of the plan file template, the Change Views are showing columns F-L, data from earlier years, which should be hidden.</p> <p>Resolution: Corrected by updating the template to hide the columns.</p>

Issue	Description
PFB-08095 - RF Expense CM does not fully zero Fixed Expense when set to 0%. [TFS 40562]	<p>Summary: When users insert an Expense calc method in a plan file and set the Variable % in column V to 100%, this causes the Fixed % to be zero. However, some forecast periods still contain fixed dollars.</p> <p>Resolution: Corrected by updating the Fixed row so that the % used is applied to the entire formula.</p>
PFB-08100 - RF Consolidated Summary report - FTE totals [TFS 40563]	<p>Summary: RF Consolidated Summary report is missing Contract, Nonproductive and Overtime FTE annual totals because the corresponding Hours totals are not copied down.</p> <p>Resolution: Corrected by copying the hours formula in row 134 to the appropriate column rows.</p>
PFB-08124 - AQ1 Forecast needs OtherDeduction in data filter [TFS 40568]	<p>Summary: Clients who do not include Other Deductions in the plan file Forecast sheet receive errors when building the plan files. Users have RFCode.RFStdLine='NA', but RFCode.RFType='OtherDeduction'. Clients that want to use a calculator for deductions and bring in Deductions by Payor AND Deductions for IP/OP will need this functionality to work. They do not want to use NoForecast as the CalcMethod because that will bring the historical data into the plan file, causing data duplication.</p> <p>Resolution: Corrected by: 1) Updating cell M151 to set the value of 1 so that OtherDeductions will interface. 2) Updating the data filter to solve for the expected configuration where RFCode.RFStdLine is either configured for 'NA' (to not interface) or configured to interface if set to an option on the list (for example, OtherDeductions).</p>
PFB-07913 - RF VCC Setup driver: When a user saves the RF VCC Setup driver, the data saves to the table, but does not save to the spreadsheet [TFS 40617]	<p>Summary: The RF VCC is opening as read-only for all users because it is set to Replace Existing in the package manager. This means that when a user saves the RF VCC Setup driver, the data saves to the table but does not save to the spreadsheet. When the user reopens the driver, they do not see the changes, so they think that their changes did not save. Also, if they make another change to the driver and then save, their previous changes are overwritten by the defaults.</p> <p>Resolution: Corrected by changing the setting in the package manager from Replace Existing to Preserve Existing to allow user changes to be updated in the driver.</p>

Issue	Description
PFB-08242 - RF Monthly Payroll to GL is incorrectly zeroing out records from prior runs [TFS 40640]	<p>Summary: The RF Monthly Payroll to GL report runs for both Hours and Dollars. If the user first runs for Hours and then for Dollars, the Hours records zero out on the second run. The reverse is also true: if Dollars is run first followed by Hours, the Dollars records are zeroed out after Hours runs.</p> <p>Resolution: Corrected by fixing the code in the Control Sheet so that the records from prior runs are saved.</p>
PFB-08244 - FIF: RF_Pct of Sal CM 1,000 and formatting row 13 [TFS 40641]	<p>Summary: In the RF Plan File template, the Pct of Salaries calc method is using the scaling factor twice, causing the percentages to be off by a factor of 1000 when the scaling factor is set to 1000. Also, hidden row 13 is not formatted similarly to visible row 7.</p> <p>Resolution: Corrected by removing the double reference to the scaling factor in the calc method and corrected the formatting to display a percent in row 13.</p>
PFB-08249 - (FIF) OP Deductions rows only picking up current quarter's data. [TFS 40645]	<p>Summary: On the Forecast tab of the Plan File template, in the OP Deductions row (OP Revenue 10 row), the current quarter displays deductions but contains zeros for prior quarters.</p> <p>Resolution: Corrected by updating the calc methods to include correct references to the columns that had been shifted when adjustments were added to the Forecast tab.</p>

Issues resolved in 2019.4.2

The following table lists the resolutions for issues addressed in 2019.4.2, released on February 10, 2020:

Issue	Description
RF Deduction Calculator - Values saved to RFDed table do not roll to new time series when crossing quarters [TFS 43143]	<p>Summary: In the RF Deductions calculator, on the Deductions tab, if any of the input cells use the calculation method “Last Saved,” when a user rolls forward to a new quarter, the cell names roll forward correctly but the inputted values do not. This issue results from save line being hard coded so that the values do not roll forward based on the selected period.</p> <p>Resolution: Corrected by changing the formula and correcting the cell mapping so that date references are captured correctly, and the correct data follows the quarter that was rolled forward.</p>

Issues resolved in 2019.4.3

The following table lists the resolutions for issues addressed in 2019.4.3, released on March 9, 2020:

Issue	Description
RF Template Changes Required [TFS 43631]	<p>Summary: The RF Template has the following issues:</p> <ol style="list-style-type: none">1. In the <i>OP Revenue NetPerUnit</i> calculation method, the Average Revenue Rate per unit calculation in column AB (and AC) is not calculating correctly. In the last row of the calc method, the formula is referencing IP Statistics instead of OP Statistics. Resolution: In the <i>IP Revenue_NetPerUnit</i> calculation method, corrected the formulas where applicable. In the <i>OP Revenue_NetPerUnit</i> calculation method, copied the corrected formulas to the relevant rows. In the <i>Oth Pt Revenue_NetPerUnit</i> calculation method, corrected the formulas as needed.2. For the <i>IP Census</i> calculation method, the Admissions in row 9 of the calculation method are not interfacing with the historical data in column T, which comes from the sum of columns Q:S. Also, CMIAdjAdmissions is not interfacing with the historical periods. Data fields that were previously interfaced directly into the report section were moved, but the report columns do not reference the added interfaced columns. Resolution: Corrected by copying the correct formulas to the right cells.3. The Benefits as a Percent of Salaries calculation method, row 9 (Percent of Salaries) is zero because row 11 of the calculation method is referencing Salaries in column AX for which there is no data displaying. Additionally, row 12 of the calculation method for the monthly columns is divided by a factor of 1,000 (cell W31). Resolution: Corrected by copying the formulas to the right cells.

Issue	Description
	<p>4. In the <i>Return Rate</i> calculation method, column T of row 9 for the Adjusted Cash Balance has different totals for columns T and U. Historical Cash is incorrectly referencing the RFHistory! tab.</p> <p>Resolution: Corrected the formula in column F of the calculation method to correctly reference the RFHistory! tab.</p> <p>5. The <i>Other Deductions</i> calculation method is not interfacing into the Forecast tab of the plan file, so the Bad Debt is not being used or forecasted in the plan files. The applicable queries are not including OtherDeductions as a selection.</p> <p>Resolution: Corrected the queries to not exclude the Bad Debt.</p> <p>6. For the <i>Pct of Salaries</i> and <i>Rate per FTE</i> calculation methods, column AC for both are referencing the wrong row for the "Last Quarter" test condition.</p> <p>Resolution: Corrected by changing the formulas so that the calculation methods are referencing the correct rows.</p>
<p>PFB-08632 - Urgent: RF Security Update Utility broke data filters for Financial and Payroll [TFS 46162]</p>	<p>Summary: A formula error in the Axiom Rolling Forecast Security Update Utility spreadsheet is causing existing non-Rolling Forecast users to have their security set to No Access when administrators change security for existing Rolling Forecast users. The utility updates security for Rolling Forecast users in tables that are shared with Axiom Budgeting and Performance Reporting. The utility queries all users into the utility so that the Rolling Forecast administrator can assign access to the Rolling Forecast module for selected users. However, other existing users that are not granted access are also present in the utility, and the [Save] tag may become activated for them as well. When this happens, the system places a blank in the existing filter for Financial, Payroll, and Provider table types for the non-Rolling Forecast users, which overwrites the filter settings for those users.</p> <p>Resolution: Corrected by changing the formulas and adding logic where needed so that the original table filter settings for non-Rolling Forecast users are preserved and not overwritten.</p>

Issues resolved in 2019.4.4

The following table lists the resolutions for issues addressed in 2019.4.4, released on May 12, 2020:

Issue	Description
RF Deduction Calculator - Values saved to RFDed table do not “roll” to new time series when crossing quarters [TFS 41382]	<p>Summary: In the RF Deductions calculator, when the calc method for an item is Last Saved, the values populated do not roll to the new quarter when crossing quarters. The Save2BD line is hard-coded and does not allow for values to roll based on RF period selected.</p> <p>Resolution: Corrected by updating the RF Deductions calculator control sheet to allow the values to roll forward.</p>
PFB-08324 - RF Security Utility Fails when client does not have provider license [TFS 41673]	<p>Summary: If a user’s system does not have the Rolling Forecast Provider license, the Axiom Rolling Forecast Security utility produces an error when a user tries to open it.</p> <p>Resolution: Corrected by changing the Security Update utility so that, instead of producing an error, the Provider section is hidden if a user does not have the Provider license.</p>
PFB-08336 - URGENT! RF Forecast: Template row 14 and Column S logic [TFS 41674]	<p>Summary: In the Forecast tab of the Rolling Forecast plan file, adjustments are not copying correctly when months roll forward because of an error in one of the cell formulas. As a result, users see incorrect Base and Variable Expense amounts in column S of the tab.</p> <p>Resolution: Corrected by revising how the standard adjustments from the Waterfall table are retrieved in columns LA:LC.</p>
PFB-08413 - Volumes for Next Quarter Total Column AB does not add months properly [TFS 42251]	<p>Summary: For both Volumes and Other Volumes calculation methods, the sum of the three months in columns X, Y, and Z do not add up in Row 1 forecast quarter (column AB) of the calculation method. Instead, the current formula is adding Row 9 of the calculation method, which is including the new one-time adjustments from columns X, Y, and Z.</p> <p>Resolution: Corrected by changing the reference in column AB for the calculation methods: IP Volume, OP Volume, Other Volume. This will now sum volume based on the first volume row of the calc method.</p>

Issue	Description
PFB-08478 - Urgent: RF Drivers are not pulling in Actuals for the last quarter of actuals [TFS 43981]	<p>Summary: On the Drivers tab of RF Drivers, actuals are not being pulled in for the last quarter of actuals.</p> <p>Resolution: Corrected by fixing the formula used in the column that pulls in actuals.</p>
RF Template Changes Required [TFS 44100]	<p>Summary: The RF (plan file) Template has the following issues:</p> <ol style="list-style-type: none"> 1. In the <i>OP Revenue NetPerUnit</i> calculation method, the Average Revenue Rate per unit calculation in column AB (and AC) is not calculating correctly. In the last row of the calc method, the formula is referencing IP Statistics instead of OP Statistics. Resolution: In the <i>IP Revenue_NetPerUnit</i> calculation method, corrected the formulas where applicable. In the <i>OP Revenue_NetPerUnit</i> calculation method, copied the corrected formulas to the relevant rows. In the <i>Oth Pt Revenue_NetPerUnit</i> calculation method, corrected the formulas as needed. 2. For the <i>IP Census</i> calculation method, the Admissions in row 9 of the calculation method are not interfacing with the historical data in column T, which comes from the sum of columns Q:S. Also, CMIAdjAdmissions is not interfacing with the historical periods. Data fields that were previously interfaced directly into the report section were moved, but the report columns do not reference the added interfaced columns. Resolution: Corrected by copying the correct formulas to the right cells. 3. The Benefits as a Percent of Salaries calculation method, row 9 (Percent of Salaries) is zero because row 11 of the calculation method is referencing Salaries in column AX for which there is no data displaying. Additionally, row 12 of the calculation method for the monthly columns is divided by a factor of 1,000 (cell W31). Resolution: Corrected by copying the formulas to the right cells.

Issue	Description
	<p>4. In the <i>Return Rate</i> calculation method, column T of row 9 for the Adjusted Cash Balance has different totals for columns T and U. Historical Cash is incorrectly referencing the RFHistory! tab.</p> <p>Resolution: Corrected the formula in column F of the calculation method to correctly reference the RFHistory! tab.</p> <p>5. The <i>Other Deductions</i> calculation method is not interfacing into the Forecast tab of the plan file, so the Bad Debt is not being used or forecasted in the plan files. The applicable queries are not including OtherDeductions as a selection.</p> <p>Resolution: Corrected the queries to not exclude the Bad Debt.</p> <p>6. For the <i>Pct of Salaries</i> and <i>Rate per FTE</i> calculation methods, column AC for both are referencing the wrong row for the "Last Quarter" test condition.</p> <p>Resolution: Corrected by changing the formulas so that the calculation methods are referencing the correct rows.</p>
<p>PFB-08558 - FIF: RF Benefits % of Salaries Column AB/AC [TFS 44134]</p>	<p>Summary: A number of issues with the Benefits as a % of Salaries calculation method is causing calculation problems in plan files that use it.</p> <p>Resolution: Corrected by adjusting the affected formulas to fix the scaling factor.</p>
<p>PFB-08568 - FIF:RF IP, OP and Other Volume Row11 Error [TFS 44135]</p>	<p>Summary: In the Forecast tab of the RF plan file, when the Current Month columns (Q, R, S) are hidden but column U displays, in row 11 of the IP Volume, OP Volume, and Other Volume calculation methods, the formula is dividing by column T instead of column P.</p> <p>Resolution: In the RF plan file template, the Current Quarter is either column T or column U, depending on the user's choice. Column T is the result of the three underlying months, while column U is the standalone, quarter-only column. The two columns work independently of each other, but in both cases, column P is the previous quarter. The formula is calculating results from the wrong column. Corrected by updating the formula in the Calculation Method Library.</p>

Issue	Description
PFB-08572 - FIF:RF IP, OP and Other Volume Row 2 [TFS 44136]	<p>Summary: In the Forecast tab of the RF plan file, the current quarter is in column T if users hide the month columns. If users do not hide the month columns, the current quarter is in column U. Currently, the formula only reads column T, regardless of whether the user hides the month columns or not.</p> <p>Resolution: Corrected by adding an “if” statement to the formula so that it reads column U when months are not hidden.</p>
PFB-08583 - FIF:RF_Salary CM remove 1000 divisor [TFS 44137]	<p>Summary: In the Forecast tab of the RF plan file, the Benefits as a Percent of Salaries calculation method is zero because row 11 of the calculation method is looking for Salaries in column AX but there is no data displayed there. Also, row 12 of the calculation method for the monthly columns is divided by cell W31, which is a scaling factor of 1,000.</p> <p>Resolution: Corrected by adjusting the scaling factor in the Salaries calculation method.</p>
PFB-08581 - RF:Urgent Volumes not taking negative growth rates into account for forecast [TFS 44154]	<p>Summary: In the Forecast tab of the RF plan file, the Annual Average and Last Quarter forecast methods are ignoring any historical negative growth rates in the historical periods.</p> <p>Resolution: Corrected the formula logic for the IP Census calculation method.</p>
PFB-08569 - RF Drivers, the pre-populated label for Summary-Label for Adjusted EBIDA shows EBSIDA [TFS 44164]	<p>Summary: In the RF Drivers, there is a typo in the pre-populated label “ Summary - Label for Adjusted EBIDA.” Instead, it reads “EBSIDA.”</p> <p>Resolution: Corrected by fixing the formula that pre-populates the affected label.</p>
PFB-08598 - Urgent RF: Expense CM [TFS 44478]	<p>Summary: In the Forecast tab of the RF plan file, when an expense is split between Variable and Fixed (the Fixed is set to use Last Quarter as the forecast method), the Fixed portion continues to decrease quarter after quarter.</p> <p>Resolution: Corrected by adding missing parentheses at the end of the formula that applies to column AD, row 8 and row 15 of the calculation method.</p>

Issue	Description
PFB-08599 - Urgent: RF Initiatives, The hours codes should be set to pull in based on the driver set up [TFS 44480]	<p>Summary: In the Initiatives tab of the RF plan file, when adding new salaries, the dollars code that is added with the salaries is keyed to H_JC_Hours. The salary codes and hours codes are matched up in the drivers. The hours codes should be set to pull in based on the driver setup.</p> <p>Resolution: Corrected by adjusting the formula to bring in the correct mapped hours.</p>
PFB-08612 - RF Expense CM contains formula error in column AF for Fixed Expense using Annual [TFS 45399]	<p>Summary: Extra commas in the cell formula for the RF Expense calculation method is causing two additional values of zero to be added to the calculation.</p> <p>Resolution: Corrected by removing the commas from the formula.</p>
PFB-08632 - Urgent: RF Security Update Utility broke data filters for Financial and Payroll [TFS 45887]	<p>Summary: Formula errors in the Axiom Rolling Forecast Security Update Utility spreadsheet are causing existing non-Rolling Forecast users to have their security set to No Access when administrators change security for existing Rolling Forecast users. The utility updates security for Rolling Forecast users in tables that are shared with Axiom Budgeting and Performance Reporting. The utility queries all users into the utility so that the Rolling Forecast administrator can assign access to the Rolling Forecast module for selected users. However, other existing users that are not granted access are also present in the utility, and the [Save] tag may become activated for them as well. When this happens, the system places a blank in the existing filter for Financial, Payroll, and Provider table types for the non-Rolling Forecast users, which overwrites the filter settings for those users.</p> <p>Resolution: Corrected by changing the formulas and adding logic where needed so that the original table filter settings for non Rolling Forecast users are preserved and not overwritten.</p>
PFB-08616 - RF Census Method forecast quarters issue with Growth % [TFS 46042]	<p>Summary: In the Forecast tab of the RF plan file, errors in the IP Census calculation method formula are causing Growth Rates to become exponential when a user enters a one-time adjustment in the Next Quarter month columns (columns Y or Z).</p> <p>Resolution: Corrected by rewriting affected formulas to remove the errors.</p>

Issue	Description
PFB-08674 - Urgent: RF Deductions Model: issues bucket [TFS 46526]	<p>Summary: RF Deductions Calculator, Payor Codes tab: the order of the payor classes is not the same on the Ddeductions tab as it is on the PayorCodes Tab. This is caused by a sorting issue.</p> <p>Resolution: Corrected by parsing the number to the correct column on the Deductions tab (used a sheet sort on that column for the Axiom Queries that bring in the payors).</p>
PFB-08684 - FIF:RF Expense CM column U [TFS 46527]	<p>Summary: In the Forecast tab of the RF plan file, when using the Expense calculation method, if the Forecast Method is set to 100% fixed, a variable expense is calculated instead because Column U is not referencing the allocation decision (variable/fixed %), causing non-zero variable values.</p> <p>Resolution: Corrected the formula in Column U.</p>
PFB-08616 - RF Census Method forecast quarters issue with Growth % [TFS 46622]	<p>Summary: In the Forecast tab of the RF plan file, errors in the IP Census calculation method formula are causing Growth Rates to become exponential when a user enters a one-time adjustment in the Next Quarter month columns (columns Y or Z).</p> <p>Resolution: Corrected by adjusting the affected calculation formulas to remove the errors.</p>
PFB-08689 - RF Adjustments_Expense Driver issue FSDetail/Payor for RF_Salaries_Phy & Mid [TFS 46529]	<p>Summary: A defect in the RF Adjustments - Expense Driver is causing the FS_Detail column to display Physician and Mid-Level salaries inaccurately, and salary rates are not coming into the plan files. It appears that the driver's Adjustments_Expense tab has the wrong codes in certain columns, displaying R_Salaries_Phy and R_Salaries_Mid instead of R_SalariesPhy and R_SalariesMid. The underscore after the word Salaries needs to be removed.</p> <p>Resolution: Corrected by updating the Adjustments tab to reference the current RFCode/FSDetail/FSPayor options.</p>
PFB-08581 - RF: Volumes not taking negative growth rates into account for forecast [TFS 46648]	<p>Summary: In the Forecast tab of the RF plan file, when there are negative growth rates in the historical periods, the Annual Average and Last Quarter forecast methods ignore any historical negative growth rates.</p> <p>Resolution: Corrected by adjusting the affected calculation method formula and removing the use of absolute value.</p>

Issue	Description
PFB-08684 - FIF:RF Expense CM column U [TFS 46649]	<p>Summary: On the Forecast tab of the RF Plan File, column U is not referencing the allocation decision (variable/fixed %), causing non-zero variable values when the fixed allocation is 100%.</p> <p>Resolution: Corrected by adjusting the formula in the reference cell (U216) to correctly reference the allocation decision.</p>
PFB-08689 - RF Adjustments_Expense Driver issue FSDetail/Payor for RF_Salaries_Phy & Mid [TFS 46650]	<p>Summary: In RF Drivers, the RFPayor codes that correspond to RFCodes in some Adjustment fields are invalid because the wrong codes are being used.</p> <p>Resolution: Corrected by updating the Adjustments tabs to reference the current RFCode/FSDetail/FSPayor options. Now if an interfaced value is not a legitimate value from the current RFCode table, it will have a selected checkbox in the delete column.</p>
PFB-08583 - FIF:RF_Salary CM remove 1000 divisor [TFS 46836]	<p>Summary: In the Salary calculation method, row 16 (the Total Inflation Rate line), the formula in column T is calculating the rate incorrectly.</p> <p>Resolution: Corrected by changing the scaling factor formula of the calculation method to 1 and then multiplying the dollar values by 1000.</p>
PFB-08558 - FIF: RF Benefits % of Salaries Column AB/AC [TFS 46837]	<p>Summary: In the Forecast tab of the RF plan file, the Benefits % of Salaries calculation method has a number of issues that are causing benefits to not calculate in the forecast quarters.</p> <p>Resolution: Corrected by changing the formulas that referenced the wrong cells and/or were using the wrong divisor.</p>
PFB-08643 - AQ5 on ProviderVolume tab in RF template [TFS 46857]	<p>Summary: On the Provider Volume tab of the RF plan file, there is a Data Filter on the Control_Sheet for Axiom Query 5 that has an incorrect formula, resulting in no records being brought in for the query.</p> <p>Resolution: Corrected by updating the applicable formula in the Data Filter field of the control sheet for Axiom Query 5.</p>

Issue	Description
<p>PFB-08674 - RF Deductions Model: issues bucket [TFS 47399]</p>	<p>Summary: In the RF Deductions calculator, errors are causing the following issues:</p> <ol style="list-style-type: none"> 1. A sorting problem is causing the order of the payor classes on the Deductions tab to be different than they are on the PayorCodes tab. 2. The index formula for all of the % areas are off because of the sorting problem. 3. Data is not coming in for current quarter months that are forecast periods. <p>Resolution: Corrected by including the payor number in column E to include in the sort order on the Deductions tab. Fixing the sorting problem also resolved the formula references (issue #2) and the data not being brought in for current quarter months (issue #3).</p>
<p>Unable to save drivers more than once due "Unable to save the data. Key must be unique." [TFS 47693]</p>	<p>Summary: When attempting to save changes to a driver after making a change, saving, then making a second change, the user receives an error stating that the system is unable to save the data because the key is not unique.</p> <p>Resolution: Corrected by changing the Save behavior to check for invalid entries or duplicate entries earlier in the save check process.</p>
<p>RF Driver- Getting an error when moving the driver period from 4 to 12 to test Ztime series & saving [TFS 47940]</p>	<p>Summary: In the RF Driver, when a user moves the driver period from 4 to 12 to test the Ztime series and then saves, the user receives a message about a cell formula error. The cell formula is referencing a quarter that does not exist (13 months into the future).</p> <p>Resolution: Corrected by updating the formula in cell AU49 to cap the number of future months to 12.</p>
<p>Error when creating a Scenario due to hard coded value in AQ2 in sheet Config_RevSalCodes data filter [TFS 47984]</p>	<p>Summary: In the RF Driver, hard-coded values in Axiom Query2 in the sheet Config_RevSalCodes data filter are causing errors when users create an RF File Group Scenario.</p> <p>Resolution: Corrected by fixing the Sum By code in the Axiom Query2 (Driver Data for Salary) to allow the field to update when the primary field changes.</p>